

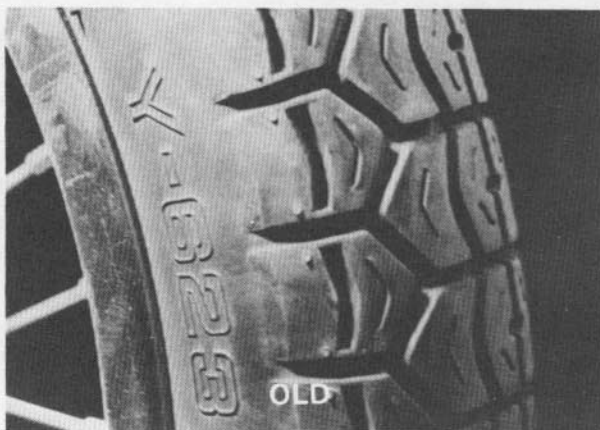
©Kawasaki Motors Corp 1974 Printed in USA

**PROBLEM:**

There have been isolated complaints concerning the tendency of some H2's to wobble at high speeds on a straight course. This is especially a problem to the rider who wishes to participate in road racing, drag racing, or other applications where speeds in excess of 80 mph are encountered.

**CORRECTION:**

Based on the finding of an extensive testing program, it is suggested that the original 3.25-19 Yokohama Y-623 front tire P/N 41021-018 be replaced with a new-type Dunlop H3.25-19 F6 tire, P/N 41021-029. Thousands of test miles on a number of different H2's, under widely varying road and speed conditions, have shown that this new tire definitely improves the H2's high-speed handling characteristics.



YOKOHAMA 3.25-19 Y-623  
P/N 41021-018



DUNLOP H3.25-19 F-6B  
P/N 41021-029

**INVENTORY NOTE:**

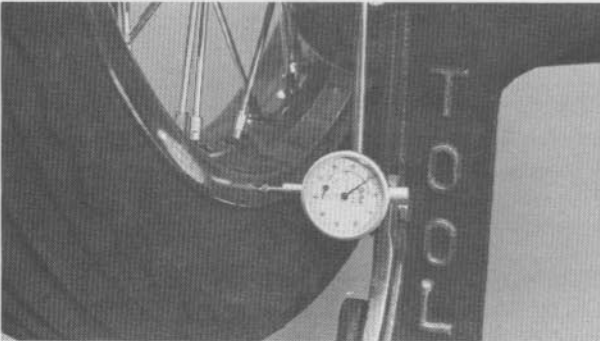
Kawasaki is no longer equipping H2's with Yokohama front tires at the factory, and this tire will no longer be available from the parts department. There are still new H2's in stock which had the old-style tire installed at the factory. It will be necessary for the dealer to change to the new Dunlop tire prior to the sale of these machines. The old tire may be added to the dealer's spare parts inventory at no cost to the dealer.

**ADDITIONAL MEASURES:**

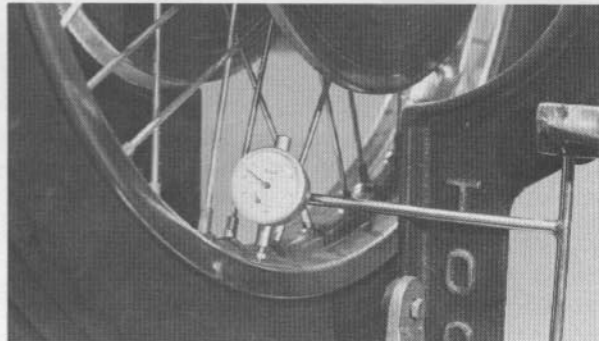
Even though the Dunlop F6 tire enhances the handling of the Kawasaki 750, be sure to check all of the following factors that may affect high-speed stability.

Please see reverse side for additional information.

- A. **WHEEL TRUING:** After mounting the new tire, place the wheel in a wheel truing stand, and, making sure that all spokes are tight, adjust the lateral and radial runout. Standard lateral runout is 1mm (.04") with a service limit of 3mm (.12"). Standard radial runout is also 1mm, but the service limit is 2mm (.08").



**LATERAL RUNOUT**  
Standard 1mm (.04")  
Service Limit 3mm (.12")

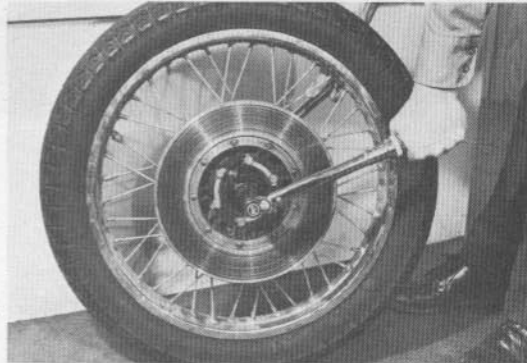
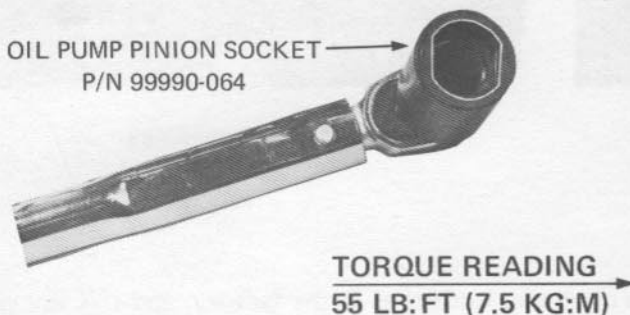


**RADIAL RUNOUT**  
Standard 1mm (.04")  
Service Limit 2mm (.08")

- B. **WHEEL BALANCING:** While the wheel is still in the truing stand, balance it as carefully as possible to ensure maximum wheel stability at all speeds.

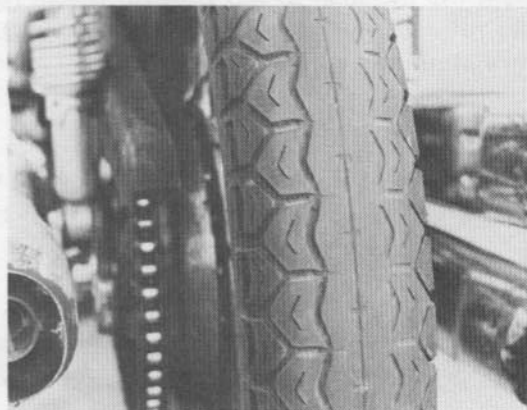
**NOTE:** *Be sure that the wheel turns freely on its bearings before attempting to balance it.*

- C. **AXLE TORQUE:** Make sure that the front axle is tightened to 55 lb.-ft. (7.5 kg-m). Several cases of speed wobble have been traced to loose axles. **NOTE:** To ensure an accurate torque measurement, use a torque wrench and an Oil Pump Pinion Socket, P/N 99990-064 (refer to National Parts Bulletin #72-9, June 26, 1972). These sockets fit the flattened ends of the H2 axle perfectly, and adapt to any 3/8" square drive.



- D. **REAR TIRE:** In some cases, an excessively worn back tire will contribute to high-speed wobble. Any such tire should be replaced if instability is to be cured completely.

- E. **TIRE PRESSURE:** Check to see that both tires are inflated to the proper pressure: 26 PSI for the front tire, and 31 PSI for the rear.



**EXCESSIVE WEAR**

**PARTS INFORMATION:**

DESCRIPTION	OLD PARTS		NEW PARTS		INTER-CHANGE	EFFECTIVE I.D.
	OLD P/N	REMARKS	NEW P/N	REMARKS	OLD ↔ NEW	
Front Tire	41021-018	Yokohama 325-19 Y-623	41021-029	Dunlop H3.25-19, F6B		H2F-23671

O = interchangeable X = not interchangeable □ = not available

**WARRANTY INFORMATION:**

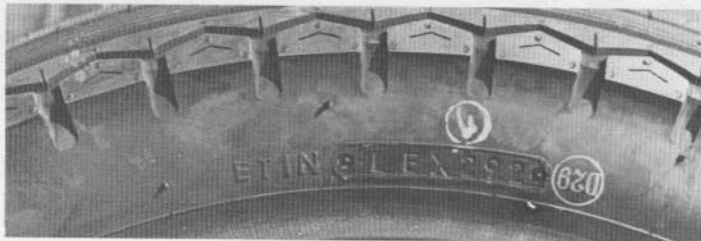
Use job code X013 (0.5 hr.) for installing the new tire, including balancing and truing.

This is a factory directed modification, CLAIM TYPE 3 on the Warranty Request Form.

**NOTE:** Dealers subscribing to the Small Claims Option Program are required to perform this modification and submit a Warranty Request Form for each unit so modified. The Small Claims Option Program applies to claim types 1 and 2 only.

**TIRE SALE REPORTING:**

Federal law requires that the I.D. number of a new tire and the name and address of the customer be reported to the tire distributor for that brand. Kawasaki does this automatically for all originally-installed tires. However, when the new F6 tire is installed, the I.D. number and the customer's name and address must be recorded, and sent to the U.S. Dunlop distributor. Tire report forms are available at no cost from the parts department. P/N 99995-505. For further information on tire reporting see warranty bulletin WTY-1 5-30-73 N. ■



TIRE I.D. NUMBER

