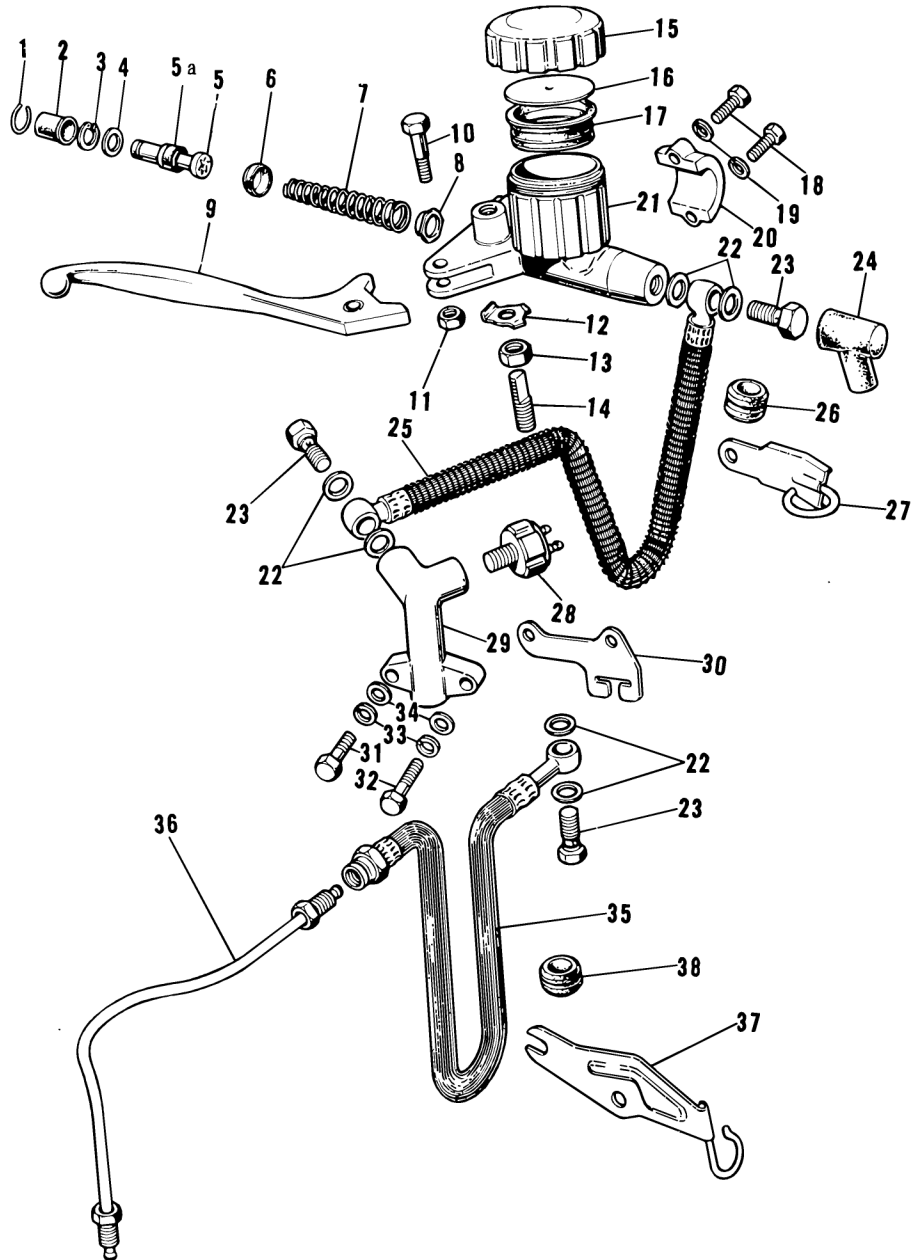


## Master Cylinder and Brake Line Assembly

(282) a



1	Stopper, dust seal	13	Nut	26	Grommet
2	Dust seal	14	Bolt	27	Bracket
3	Circlip	15	Cap	28	Pressure switch
4	Stopper, piston	16	Plat	29	3-way fitting
5	Piston assembly	17	Cap seal	30	Guide
5a	Secondary cup	18	Bolt	31	Bolt
6	Primary cup	19	Washer	32	Bolt
7	Spring assembly	20	Master cylinder mounting	33	Lock washer
8	Check valve assembly	21	Master cylinder body	34	Washer
9	Brake lever	22	Washer	35	Hose
10	Bolt	23	Banjo bolt	36	Pipe
11	Nut	24	Dust cover	37	Bracket
12	Lock washer	25	Hose	38	Grommet